

◆ Charger troubleshooting

1. If the LED lamp do not work,
 - Check connection of power cord into the outlet,
 - Check the cleanliness of power cord and battery terminal,
 - Insert another battery to check the charger working normally.
2. If the green LED flickering when the battery is applied.
 - Low temperature : Let stand at room temperature until normal temperature.

※ If this self – checking does not solve the problem,
please contact with Aimsak or authorized service center nearest you.

▶ The fastening torque is affected by a wide variety of factors including the following.

- ① When the battery cartridge is discharged almost completely, voltage will drop and the fastening torque will be reduced.
- ② Failure to use the correct size socket or worn socket will cause a reduction in the fastening torque.
- ③ Operating the tool at low speed will cause a reduction in the fastening torque.

【Maintenance & Storage】

Always be sure that the tool is switched off and the battery is removed before attempting to perform inspection or maintenance.

- ▶ Keep the tool clean and inspect it regularly.

【Guarantee】

- ▶ It is warranted 1 year to be free of defects from workmanship and materials for the period of origin purchase. Some states do not allow the exclusion or limitation or incidental or consequential damages, so the limitation or exclusion below may not apply to you.
- Motor, battery is warranted 6 months since the period of origin purchase.
 - Battery is consumable item so must pay for a new battery.
- ▶ This warranty does not apply where
- repairs have been made or attempted by others ; (such as immersion, external shock, overload operation)
 - natural disasters (fire, earthquake, flood etc)
 - repairs are required because of normal wear and tear ;
 - the tool has been abused, misused or improperly maintained ;
 - alterations have been made.

Use within the scope of the tasks listed in the manual.

Otherwise, the equipment get damaged, shorten life or get injured.

We do not have the responsibility and not able to repair your power tool.

Add : 171, Yangcheong Songdae-Gil, Ohchang-eup, Cheongwon-gu,
Cheongju-Si, Chungcheongbuk-do, Rep. of Korea.
Representive No. 62-43-217-8400
E-mail : aimsak@aimsak.com

Aimsak

MADE IN KOREA
< 2014-04 >

Aimsak

Operation Instructions

AI 414MI / AI 414M+

14.4V IMPACT DRIVER



AW 414QI / AW 414Q+

14.4V IMPACT WRENCH



【Cautions】

- ▶ Do not attempt to overload, after consider intensity of the work using right power tools.
If operating time has become excessively shorter, stop operating immediately.
It may result in a risk of overheating, possible burns and even an explosion.

Index

1. Specification	2
2. Exploded view	2~3
3. Safety Instructions	3~5
4. Operating Instructions	6~8
5. Maintenance & Storage	8
6. Guarantee	8

⚠ **WARNING** Read all safety warnings and instructions. Failure to follow all instructions may result in electric shock, fire and/or serious personal injury.

CE
7750091

Aimsak Inc.

[Tool Specification]

► Specification

* When reading the operation manual check the product name for yours precisely.

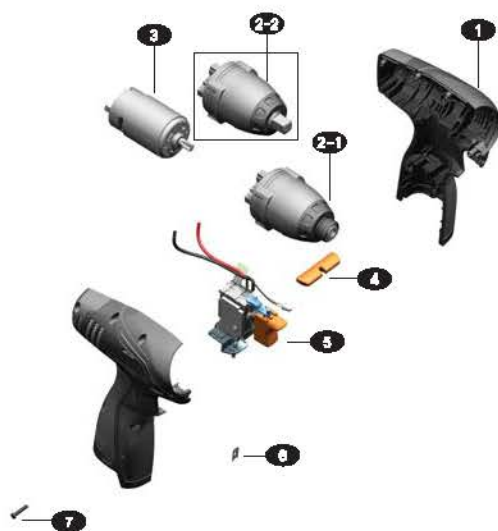
	AI 414MI	AI 414M+	AW 414QI	AW 414Q+
	Cordless Impact Driver	Cordless Impact Driver	Cordless Impact Wrench	Cordless Impact Wrench
Voltage	DC 14.4V		DC 14.4V	
Chuck capacity	6.35mm (1/4" HEX)		9.52mm (3/8" Square)	
No load speed	2,800 rpm		2,800 rpm	
Impacts per minute	3,200 ipm		3,200 ipm	
Max. Torque	120N·m / 1,224kgf·cm	130N·m / 1,326kgf·cm	130N·m / 1,326kgf·cm	140N·m / 1,428kgf·cm
Switch	Variable Speed Control		Variable Speed Control	
Net Weight	0.99 kg		0.99 kg	

► Contents

	AI 414MI	AI 414M+	AW 414QI	AW 414Q+
Cordless Tool	1 EA	1 EA	1 EA	1 EA
Battery	2 EA		2 EA	
Charger		1 EA		
Operation Manual		1 EA		
Plastic Case		1 EA		

[Exploded View]

AI 414MI / AW 414QI

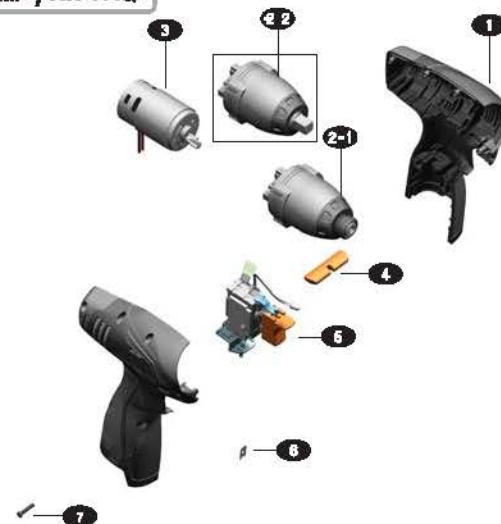


Part Name

NO.	Part Name	Q'ty
1	Housing	1
2-1	Driver Gear Box	1
2-2	Wrench Gear Box	1
3	Motor	1
4	Reversing Lever	1
5	Switch	1
6	Housing clamp	2
7	Star Screw	7

[Exploded View]

AI 414M+ / AW 414Q+



Part Name

NO.	Part Name	Q'ty
1	Housing	1
2-1	Driver Gear Box	1
2-2	Wrench Gear Box	1
3	Motor	1
4	Reversing Lever	1
5	Switch	1
6	Housing clamp	2
7	Star Screw	7

- * Due to our continuing program of research and development, the specifications herein are subject to change without notice.
- * Note: Specifications may be changed by the requirement of country.

[Safety Instructions]

⚠ WARNING Read all safety warnings and instructions. Failure to follow all instructions listed below may result in electric shock, fire and/or serious personal injury.

Save all warnings and instructions for future reference.

The term "power tool" in the warnings refers to your mains-operated (corded) power tool or battery-operated (cordless) power tool.

1. Work area

- **Keep work area clean and well lit.**
Cluttered and dark area invites injuries.
- **Do not operate power tools in explosive atmospheres, such as in the presence of flammable liquids, gases or dust.** Power tools create sparks which may ignite the dust or fumes.
- **Keep children and bystanders away while operating power tools.**
Distractions can cause you to lose control.

2. Electrical safety

- **Power tool plugs must match the outlet. Never modify the plug in any way.**
Do not use any adapter plugs with earthed (grounded) power tools. Unmodified plugs and matching outlets will reduce risk of electric shock.
- **Avoid body contact with earthed or grounded surface, such as pipes, radiators, ranges and refrigerators.** There is an increased risk of electric shock if your body is earthed or grounded.
- **Do not expose power tools to rain or wet conditions.** Water entering a power tool will increase the risk of electric shock.
- **Do not abuse the cord. Never use the cord for carrying, pulling or unplugging the power tool.**
Keep cord away from heat, oil, sharp edges or moving parts. Damaged or entangled cords increase the risk of electric shock.

- ▶ **When operating a power tool outdoors, use an extension cord suitable for outdoor use.**

Use of a cord suitable for outdoor reduces the risk of electric shock.

- ▶ **If operating a power tool in a damp location is unavoidable, use a residual current device (RCD) protected supply.** Use of an RCD reduces the risk of electric shock.

3. Personal safety

- ▶ **Stay alert, watch what you are doing and use common sense when operating a power tool.**
Do not use a power tool while you are tired or under the influence of drugs, alcohol or medication.
A moment of inattention while operating power tools may result in serious personal injury.
- ▶ **Use safety equipment. Always wear eye protection.** Safety equipment such as dusk-mask, non-skid safety shoes, hard hat or hearing protection must be used for appropriate conditions. These will reduce personal injuries.
- ▶ **Prevent unintentional starting. Ensure the switch is in the off-position before connecting to power source and/or battery pack, picking up or carrying the tool.** Carrying power tools with your finger on the switch or energising power tools that have the switch on invites accidents.
- ▶ **Remove any adjusting key or wrench before turning the power tool on.** A wrench or a key left attached to a rotating part of the power tool may result in personal injury.
- ▶ **Do not overreach. Keep proper footing and balance at all times.** This enables better control of the power tool in unexpected situations.
- ▶ **Dress properly. Do not wear loose clothing or jewellery.**
Keep your hair, clothing, and gloves away from moving parts.
Loose clothes, jewellery or long hair can be caught in moving parts.
- ▶ **If devices are provided for the connection of dust extraction and collection facilities, ensure these are connected and properly used.** Use of dust collection can reduce dust-related hazards.

4. Power tool use and care

- ▶ **Do not force the power tool. Use the correct power tool for your application.**
The correct power tool will do the job better and safer at the rate for which it was designed.
- ▶ **Do not use the power tool if the switch does not turn it on and off.**
Any power tool that cannot be controlled with the switch is dangerous and must be repaired.
- ▶ **Disconnect the plug from the power source and/or the battery pack from the power tool before making any adjustments, changing accessories, or storing power tools.** Such preventive safety measures reduce the risk of starting the power tool accidentally.
- ▶ **Store idle power tools out of the reach of children and do not allow persons unfamiliar with the power tool or these instructions to operate the power tool.** Power tools are dangerous in the hands of untrained users.
- ▶ **Maintain power tools. Check for misalignment or binding of moving parts, breakage of parts and any other condition that may affect the power tool's operation.** If damaged, have the power tool repaired before use.
Many accidents are caused by poorly maintained power tools.
- ▶ **Keep cutting tools sharp and clean.** properly maintained cutting tools with sharp cutting edges are less likely to bind and are easier to control.
- ▶ **Use the power tool, accessories and tool bits etc. in accordance with these instructions, taking into account the working conditions and the work to be performed.** Use of the power tool for operations different from those intended could result in a hazardous situation.

5. Li-ion Battery use and care

- ◆ **Li-ion battery can be recharged by 100% even it is not full discharged.**
(Li-ion battery has no memory effect)
Memory effect : After first use, or neglect long-term use 70~80% of the exercise becomes ability phenomenon.
- ▶ **Use power tools with specifically designated battery packs.**
Use of any other battery packs may create a risk of injury and fire.
- ▶ **Ensure that the outside surface of battery terminal is clean.**
It causes fire, explosion.
- ▶ **Cool the power tool for 10 minutes before you replace to a new battery if you operated until discharged.**
Heat leads to damage of tool and battery.

- ▶ **Do not disassemble the battery, and protect against shock.**
Short circuits occurs and may cause fires and explosions.
- ▶ **Allow heated batteries to cool before charging.**
Please refer to the enclosed with an NTC temperature monitor which allows charging only within a temperature range of 0~55°C. Or it will cause serious damaged to the battery pack, and after returning to the normal temperature range the charge is done.
- ▶ **Do not use the battery charger connect to transformers as DC power charger or engine generator.**
Due to failure and fire.
- ▶ **This charger has been designed to stop for the battery in cold weather below 0°C.**
Do charge the battery cartridge at room temperature - 0°C ~ 45°C (32°F ~ 113°F).
- ▶ **Please avoid enclosed-place while charging and use in well-ventilated place.**
Also, do not cover with fabrics and vinyl while charging. Due to risk of fire.
- ▶ **Do not disassemble the battery charger randomly. Due to risk of failure.**
- ▶ **Have your battery charger repaired by an authorized Aimsak Service Center.**

6. Service

- ▶ **Have your power tool serviced by a qualified repair person using only identical replacement parts.**
This will ensure that the safety of the power tool is maintained. This will prolong the useful life of the battery and can be recharged up to 2,000 times when used properly.
- ▶ **(+) and (-) terminal avoid to contact with metal.** Also do not keep and move with metal necklace and hairpin.
Due to risk of fires, burns and explosion by short-circuit.
- ▶ **Do not connect (+) and (-) in reverse, do not charge as (+) and (-) polarity in changed.**
Charging as the change of polarity is a risk of fire or explosion.
- ▶ **Do not expose battery to water or rain.**
- ▶ **Never completely discharge the battery pack.** Not using for long time, please recharge once in 3 months.
It can not be charged when completely discharged. If so, please contact to nearest A/S center.
- ▶ **Do not quick charging the battery several times in succession.** Do not recharge the battery again after using it for a short period.(ex, 5 mins)
- ▶ **Ensure that batteries are charged using the correct charger recommended by the manufacturer.**
Otherwise, It may current the risk of fire or explosion.
- ▶ **Do not expose the battery to the sunshine for a long time period.** Due to risk of fire and explosion.
- ▶ **Overloading or using in high temperature causes to leak electrolyte of battery.**
If the seal is broken device and flowing leakage contact with skin wash immediately with soap and water.
Ensure that if electrolyte gets in to your eyes, rinse them out with water and seek medical attention right away.
Liquid comes out from the battery irritates skin and causes fire.
- ▶ **Do not put next to fire or burn it even if it is damaged badly or completely discharged.**
Due to risk of fire and explosion.
- ▶ **Ensure battery is disposed of safely as instructed by manufacturer.**
Do not throw the battery away in household garbage, fire or water.
Due to risk of fire, explosion and environmental pollution.
- ◆ **Li-ion Battery Charger Instructions.**
⚠ **WARNING! Use the correct voltage of charger.**
- ▶ **Do not charge other manufacturer batteries only except Aimsak's one.**
The appliance is only suitable for charging Aimsak batteries. Due to risk of fire and explosion.
- ▶ **Ensure that the plug and power code is abnormalities.** Do not use damaged charger. Due to electric shock.
- ▶ **Ensure the switch is in the off position before inserting battery pack.**
Inserting the battery pack into power tools that have the switch on invites accidents.
- ▶ **Keep the battery charger in a dry and frost-free place.**
Enter water in the battery charger currents failure and electric shock.
- ▶ **Do not carry the battery charger with power code and not to plug out with the wire.**
Protect from heat, water and sharp edge. Due to risk of short-circuit.

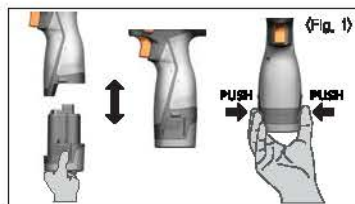
- ▶ **Plug out immediately if battery charger is damaged or heated,** due to fire and explosion when continue charging.
- ▶ **Ensure that charger terminal is clean. Pollution causes electric shock.**
- ▶ **Do not charge and operate the battery charger on combustible ground or surroundings** due to its heating during the charging process. Heated battery charger currents to fire.

[Operating Instructions]

◆ Operation

▶ Installing and removing battery (Refer to Fig. 1)

Do not use force when inserting the battery.
To insert the battery, align the tongue on the battery with the groove in the housing and slip into place. Always insert it all the way until it locks in place with a little click. If not, it may accidentally fall out of the tool.
To remove the battery, withdraw it from the tool while pressing the buttons on both sides of the battery.

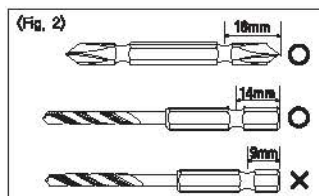


▶ Installing or removing driver bit - (A1414M0 / A1414M+) (Refer to Fig. 3)

- 1) Switch off the tool and put the reversing lever in neutral.
- 2) Pull the sleeve in the direction of the arrow and insert the bit-piece and bit into the sleeve as far as it will go.
- 3) Then release the sleeve to secure the bit.
- 4) Shake the socket to make sure it is properly fixed.
- 5) To remove the bit, pull the sleeve in the direction of the arrow and pull the bit out firmly.

⚠ Caution

1. If the bit is not inserted deep enough into the sleeve, the sleeve will not return to its original position and the bit will not be secured. In this case, try re-inserting the bit according to the instructions above.
2. To install these types of bits (more than 14mm), follow the procedure. (Refer to Fig. 2)



▶ Installing or removing driver bit - (AW414Q1 / AW414Q+) (Refer to Fig. 3)

- Always use the correct size socket (3/8") for bolts and nuts.
An incorrect size socket will result in inaccurate and inconsistent fastening torque and/or damage to bolt or nut.
- 1) Switch off the tool and put the reversing lever in neutral.
 - 2) Push it onto the shaft ring of the tool until it locks into place.
 - 3) Shake the socket to make sure it is properly fixed.
 - 4) To remove the Socket, simply pull it off.

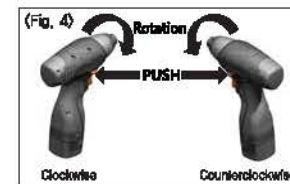


▶ Reversing switch action (Refer to Fig. 4)

Clockwise rotation : Depress the reversing lever as the picture, (Tightening screw operation)

Counterclockwise rotation : Depress the reversing lever as the picture, (Releasing screw operation)

Caution! Use the reversing switch only after the tool comes to a complete stop.



▶ Switch action (Refer to Fig. 5)

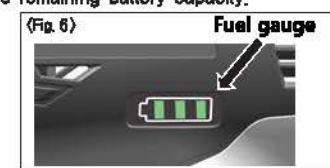
To start the tool, simply pull the switch trigger.
Tool speed increases by increasing pressure on the switch trigger.
Release the switch trigger to stop. Safety brake devices are set to the switch and stop immediately when you release the switch.
Pull the switch trigger to light up the lamp. The lamp keeps on lighting while the switch trigger is being pulled.
The lamp goes out after releasing the trigger.



▶ Fuel gauge (Refer to Fig. 6)

Lamp on the fuel gauge panel go out several seconds after releasing the switch trigger.
Please refer to the following table for the LED Indicator status and the remaining battery capacity.

Indicator	Remaining battery capacity
Full light on	(Over) 80%
light on	50 ~ 80%
light on	20 ~ 50%
OFF	(Below) 20%



◁ Available Charger and Battery ▷

	Voltage	Battery	Available Charger
	14.4V	B20P14A B26P14A	ALC 3540

- * Charging battery B20P14A, B26P14A, use the charger ALC 3540 which can be checked voltage of each battery cell.
- > Prevent overcharge for life and safety of battery.
- > Charger ALC 3530 is not compatible.

◆ Indicators and Meaning

Indicators	Meaning
Standby	▶ Green LED Flickering ▶ Battery Charging is workable.
Charging	▶ Red LED on ▶ Battery is being charged.
Finish	▶ Green LED on ▶ Fully charged.
Battery High Temperature	▶ Red & Green LED on ▶ Battery temperature has missed the normal range(0~45°C). Charge will automatically start when allowable temperature is reached.
Battery low voltage	▶ Red/Green ▶ Pre-charging mode voltage of the battery is low. (When a constant voltage charging mode is switched to rise.)