

AM 414U

14,4 V Multi Cutter



Index

1. Specification	2
2. Exploded view	2
3. Safety Instructions	3~8
4. Operating Instructions	9~13
5. Maintenance & Storage	14
6. Noise / vibration information	14
7. Warranty	14
8. Environmental Protection	15

⚠ WARNING Read all safety warnings and instructions.

Failure to follow all instructions may result in electric shock, fire and / or serious personal injury.

[Cautions]

Do not attempt to overload, after consider intensity of the work using right power tools. If operating time has become excessively shorter, stop operating immediately. It may result in a risk of overheating, possible burns and even an explosion.

【 Tool Specification 】

► Specification

Model	AM 414U
Spec.	Multi cutter
Voltage	DC 14.4V
No Load Oscillation	4,000~17,000 opm
Oscillation Angle	2.8 °
Battery	Li-ion 14.4 V / 2.0 Ah
Weight	0.96 kg
Charger	ALC 3540M
Charger Input	AC 220 V / 60 Hz

► Contents

	AM 414U
Tool	1 EA
Battery	2 EA
Charger	1 EA
Operation Instructions	1 EA
Plastic Case	1 EA

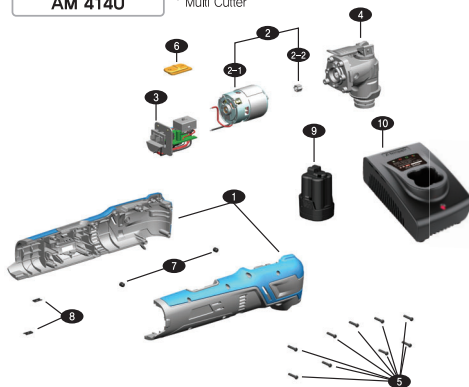
- ※ The Specifications herein are subject to change without notice.
 ※ Note : Specification may be changed by the requirement of country.

【 Exploded View 】

- ※ Certain function and part may change without notice for improvement.

AM 414U

* Multi Cutter



Part Name

NO.	Part Name	Q'ty
1	Body	1
2	Motor Ass'y	1
2-1	Motor	1
2-2	Motor Pinion	1
3	Switch Ass'y	1
4	Gear Box Ass'y	1
5	Screw	9
6	Switch	1
7	Battery Bump	1
8	Housing Clamp	2
9	Battery	2
10	Charger	1

【 Safety Instructions 】



WARNING Read all safety warnings and instructions.

Failure to follow all instructions may result in electric shock, fire and / or serious personal injury.

Save all warnings and instructions for future reference.

The term "Power tool" in the warnings refers to corded power tool or battery operated power tool.

1. Work area

- ▶ **Keep work area clean and well lit.** Cluttered and dark area may cause injuries.
- ▶ **Do not operate power tools in explosive atmospheres, such as in the presence of flammable liquids, gases or dust.** Power tools create sparks which may ignite the dust or fumes.
- ▶ **Keep children and bystanders away while operating power tool.** Distractions can cause you to lose control.

2. Electrical safety

- ▶ **Power tool plugs must match the outlet. Never modify the plug in anyway. Do not use any adapter plugs with earthed(grounded) power tools.** Unmodified plugs and matching outlets will reduce risk of electric shock.
- ▶ **Avoid body contact with the earthed or grounded surface, such as pipes, radiators, ranges and refrigerators.** There is an increased risk of electric shock if your body is earthed or grounded.
- ▶ **Do not expose power tools to rain or wet conditions.** Water entering a power tool will increase the risk of electric shock.
- ▶ **Do not abuse the cord. Never use the cord for carrying, pulling or unplugging the power tool. Keep cord away from heat, oil, sharp edges or moving parts.** Damaged or entangled cords increase the risk of electric shock.
- ▶ **When operating power tools in outdoor, use an extension cord suitable for outdoor use.** Use of a cord suitable for outdoor reduces the risk of electric shock.
- ▶ **If operating a power tool in a damp location is unavoidable, use a residual current device(RCD) protected supply.** Use of an RCD reduces the risk of electric shock.

3. Personal safety

- ▶ **Stay alert, watch what you are doing and use common sense when operating power tools. Do not use power tools while you are tired or under the influence of drugs, alcohol or medication.** A moment of inattention while operating power tools may result in serious personal injury.
- ▶ **Use safety equipment. Always wear proper eye protection.** Safety equipment such as dusk-mask, non-skid safety shoes and hearing protection, must be used for appropriate conditions. These will reduce personal injuries.
- ▶ **Prevent unintentional starting. Ensure the switch is off-position before connecting to power source and/or battery pack, picking up or carrying the tool.** Carrying power tools with your finger on the switch may cause accidents.
- ▶ **Remove any adjusting key or wrench before turning the power tool on.** A wrench or a key left attached to a retaining part of the power tool may result in personal injury.

- ▶ **Do not overreach, Keep proper footing and balance at all times.** This enables better control of the power tool in unexpected situations,
- ▶ **Dress properly. Do not wear loose clothing of jewellery, keep your hair, clothing, and gloves away from moving parts.** Loose clothes, jewellery or long hair can be caught in moving parts,
- ▶ **If devices are provided for the connection of dust extraction and collection facilities, ensure these are connected and properly used.** Use of dust collection can reduce dust-related hazards,

4. Use and care

- ▶ **Do not force the power tool. Use the correct power tool for your application.** The correct application will do the job better and safer at the rate for which it was designed,
- ▶ **Do not use the power tool if the switch does not turn it on and off.** Any power tool that cannot be controlled with the switch is dangerous and must be repaired,
- ▶ **Disconnect the plug from the power source and/or the battery pack from the power tool before making any adjustments, changing accessories, or storing power tools.** Such preventive safety measures reduce the risk of starting the power tool accidentally,
- ▶ **Store idle power tools out of the reach of children and do not allow persons unfamiliar with the power tool or these instructions to operate the power tool.** Power tools are dangerous in the hands of untrained users,
- ▶ **Maintain power tools. Check for misalignment or binding of moving parts, breakage of parts and any other condition that may affect the power tools operation.** If damaged, have the power tool repaired before use. Many accidents are caused by poorly maintained power tools,
- ▶ **Keep cutting tools sharp and clean.** Properly maintained cutting tools with sharp cutting edges are less likely to bind and are easier to control,
- ▶ **Use the power tool, accessories and tool bits etc. in accordance with these instructions, taking into account the working conditions and the work to be performed.** Use of the power tool for different operations from those intended could result in a hazardous situation,

5. Li-ion Battery use and care

- ▶ **Li-ion Battery can be recharged by 100% even if is not fully discharged.** (Li-ion battery has no memory effect*)
- * Memory effect : After first use, or neglect long-term use 70~80% of the exercise becomes ability phenomenon,
- ▶ **Use power tools with specifically designated battery packs.** Use of any other battery packs may create a risk of injury and fire,
- ▶ **Ensure that the outside surface of battery terminal is clean.** It causes fire, explosion,
- ▶ **Cool off the power tool for 10 minutes before you replace to a new battery if you operated until discharged.** Heat leads to damage of tool and battery,
- ▶ **Do not disassemble the battery, and protect against shock.** Short circuits occurs and may cause fires and explosions,
- ▶ **Allow heated batteries to cool off before charging.** Please refer to the enclosed with an NTC temperature monitor which allows charging only within a temperature range of 0~55°C. Or it will cause serious damaged to the battery pack,

- ▶ **Do not use the battery charger connect to transformers as DC power charger or engine generator.**
Due to failure and fire,
- ▶ **This charger has been designed to stop to charge the battery in cold weather below 0°C.**
Do charge the battery cartridge at room temperature – 0°C~45°C (32°F ~113°F).
- ▶ **Please avoid enclosed place while charging and use in well-ventilated place.** Also, do not cover with fabrics and virly while charging due to risk of fire,
- ▶ **Do not disassemble the battery charger randomly due to risk of failure.**
- ▶ **Have your battery charger repaired by an authorized Aimsak Service Center.**

6. Service

- ▶ **Have your power tool serviced by a qualified repair person using only identical replacement parts.**
This will ensure that the safety of the power tool is maintained. This will prolong the useful life of the battery and can be recharged up to 2,000 times when used properly.
- ▶ **(+) and (-) terminal avoid to contact with metal.** Also do not keep and move with metal necklace and hairpin, due to risk of fires, burns and explosion by short-circuit,
- ▶ **Do not connect (+) and (-) in reverse, do not charge as (+) and (-) polarity in changed.**
Charging as the change of polarity is a risk of fire or explosion,
- ▶ **Do not expose battery to water or rain,**
- ▶ **Never completely discharge the battery pack.** Not using for long time, please recharge once in 3 months. It can not be charged when completely discharged, If so, please contact nearest A/S center,
- ▶ **Do not discharge Li-ion battery completely as fully discharged battery may cause not to charge the battery properly.** In this case, contact authorized service center to solve it,
- ▶ **Ensure that batteries are charged using the correct charger recommended by the manufacturer.**
Otherwise, It may invite the risk of fire or explosion,
- ▶ **Do not expose the battery to the sunshine for a long time period due to risk of fire and explosion,**
- ▶ **Overloading or using in high temperature causes to leak electrolyte of battery.**
If the seal is broken or flowing leakage contact with skin, wash immediately with soap and water, Ensure that if electrolyte gets in to your eyes, rinse them out with water and seek medical attention right away, Liquid comes out from the battery irritates skin and causes fire,
- ▶ **Do not put next to fire or burn it even if it is damaged badly or completely discharged**
due to risk of fire and explosion,
- ▶ **Ensure battery is disposed of safely as instructed by manufacturer.** Do not throw the battery away in household garbage, fire or water due to risk of fire, explosion and environmental pollution,

◆ Li-ion Battery Charger Instructions.

 **WARNING! Use the correct voltage of charger.**

- ▶ **Do not charge other manufacturer batteries other than 'Aimsak' s one.** The appliance is only suitable for charging Aimsak batteries due to risk of fire and explosion,
- ▶ **Ensure that the plug and power cord is properly appropriated.**
Do not use damaged charger due to electric shock,
- ▶ **Ensure the switch is off position before inserting battery pack.** Inserting the battery pack into power tools that have the switch on may cause accidents,

- ▶ **Keep the battery charger in a dry and frost-free place.** Enter water in the battery charger create failure and electric shock,
- ▶ **Do not carry the battery charger with power cord and not to plug out with the wire.** Protect from heat, water and sharp edge due to risk of short-circuit,
- ▶ **Plug out immediately if battery charger is damaged or heated** due to fire and explosion when charging continuously,
- ▶ **Ensure that charger terminal is clean.** Pollution causes electric shock,
- ▶ **Do not charge and operate the battery charger on combustible ground or surroundings** due to its heating during the charging process. Heated battery charger currents may cause fire,



Multi Cutter Safety Warning



Wear Safety Glass Wear Ear Plug Wear Mask Follow Safety Instruction

- ▶ Read all safety warnings, all instructions, drawing and specification provided with product. Failure to follow the warnings and instructions may result in electric shock, fire and/or serious damage.
- ▶ Do not use accessories which are not specifically designed and recommended by the tool manufacturer. Just because the accessory can be attached to your power tool, it does not assure safe operation.
- ▶ Do not use a damaged accessory. Before each use inspect the accessory such as abrasive wheels for chips and cracks, backing pad for cracks, tear or excess wear, wire brush for loose or cracked wires. If power tool or accessory is dropped, inspect for damage or install an undamaged accessory. After inspecting and installing an accessory, position yourself and bystanders away from the plane of the rotating accessory and run the power tool at maximum no-load speed for one minute. Damaged accessories will normally break apart during this test time.
- ▶ Wear personal protective equipment. Depending on application, use face shield, safety goggles or safety glasses. As appropriate, wear dust mask, hearing protectors, gloves and workshop apron capable of stopping small abrasive or workpiece fragments. The eye protection must be capable of stopping flying debris generated by various operations. The dust mask or respirator must be capable of filtering particles generated by your operation. Prolonged exposure to high intensity noise may cause hearing loss.
- ▶ Keep bystanders a safe distance away from work area. Anyone entering the work area must wear personal protective equipment. Fragments of workpiece or of a broken accessory may fly away and cause injury beyond immediate area of operation.
- ▶ Hold power tool by insulated gripping surfaces only, when performing an operation where the cutting accessory may contact hidden wiring or its own cord. Cutting accessory contacting a "live" wire may make exposed metal parts of the power tool "live" and shock the operator.
- ▶ Never lay the power tool down until the accessory has come to a complete stop. The spinning accessory may grab the surface and pull the power tool out of your control.
- ▶ Do not run the power tool while carrying it at your side. Accidental contact with the spinning accessory could snag your clothing, pulling the accessory into your body.
- ▶ Regularly clean the power tool's air vents. The motor's fan will draw the dust inside the housing and excessive accumulation of powdered metal may cause electrical hazards.
- ▶ Do not operate the power tool near flammable materials. Sparks could ignite these materials.

- ▶ Do not use accessories that require liquid coolants. Using water or other liquid coolants may result in electrocution or shock
- ▶ Keep using power tools away from place that has flammable liquid, gas or dust. Spark or hot particles from cutting or motor brush may cause fire with flammable materials.
- ▶ Make sure to apply certain possible pressure during operation. Unstable pressure may cause decreased work performance and cause possible jam of blade

Kickback and related safety warnings

※ Kickback is the result of power tool misuse and/or incorrect operating procedures or conditions and can be avoided by taking proper precautions as given below.

- ▶ Maintain a firm grip on the power tool and position your body and arm to allow you to resist kickback forces. The operator can control torque reactions or kickback forces, if proper precautions are taken.
- ▶ Never place your hand near the rotating accessory. Accessory may kickback over your hand.
- ▶ Do not position your body in the area where power tool will move if kickback occurs. Kickback will propel the tool in direction opposite to the wheel's movement at the point of snagging.
- ▶ Use special care when working corners, sharp edges, etc. Avoid bouncing and snagging the accessory. Corners, sharp edges or bouncing have a tendency to snag the rotating accessory and cause loss of control or kickback.

Additional safety warnings specific for abrasive cutting off operations

- ▶ Do not "jam" the cut-off blade or apply excessive pressure. Do not attempt to make an excessive depth of cut. Overstressing the blade increases the loading and susceptibility to twisting or binding of the blade in the cut and the possibility of kickback or wheel breakage.
- ▶ Do not position your body in line with and behind the blade. When the blade, at the point of operation, is moving away from your body, the possible kick-back may propel the blade and the power tool directly at you.
- ▶ When blade is binding or when interrupting a cut for any reason, switch off the power tool and hold the power tool motionless until the blade comes to a complete stop. Never attempt to remove the blade from the cut while the blade is in motion otherwise kickback may occur. Investigate and take corrective action to eliminate the cause of blade binding.
- ▶ Do not restart the cutting operation in the workpiece. Let the blade reach full speed and carefully reenter the cut. The blade may bind, walk up or kickback if the power tool is restarted in the workpiece.
- ▶ Support panels or any oversized workpiece to minimize the risk of blade pinching and kickback. Large work-pieces tend to sag under their own weight. Supports must be placed under the workpiece near the line of cut and near the edge of the workpiece on both sides of the blade.
- ▶ Use extra caution when making a "pocket cut" into existing walls or other blind areas. The protruding blade may cut gas or water pipes, electrical wiring or objects that can cause kickback.
- ▶ Check for other materials such as nail or screw before working on wood, plywood, building material, etc. by blade for wood. Injury of operator and damage to blade can be occurred. As the case maybe, remove other materials or use bimetal blade.
- ▶ Do not use blade excessively long time for cutting wall tile. This may cause fast abrasion of blade.
- ▶ For insert cutting work, apply to soft material as much as possible. Otherwise, injury of operator and damage of blade can be occurred.

Safety warnings specific for sanding operations

- ▶ Do not use excessively oversized sanding disc paper. Follow manufacturer's recommendations, when selecting sanding paper. Larger sanding paper extending beyond the sanding pad presents a laceration hazard and may cause snagging, tearing of the disc, or kickback.
- ▶ When selectively sanding on the spot, the sanding sheet can heat up considerably. Reduce the orbital stroke rate and the sanding pressure, and allow the sanding sheet to cool down regularly.
- ▶ Use appropriate sanding paper according to application and do not use other material for application
- ▶ Observe the applicable regulations for sanding paint. Pay special attention to the followings: Whenever possible, use a vacuum extractor for dust collection. Take special care when sanding paint which is possibly lead based: do not let children or pregnant women enter the work area. All persons entering the work area should wear a mask specially designed for protection against lead paint dust and fumes. Do not eat, drink or smoke in the work area. Dispose of dust particles and any other removal debris safely.
- ▶ Take special care when sanding some woods (e.g. beech, oak) and metal which may produce toxic dust. Wear a dust mask specially designed for protection against toxic dust and fumes and ensure that persons within or entering the work area are also protected.
- ▶ Use this tool in a well-ventilated area during sanding and cutting works, as well as when sanding ferrous metals.

Scraping related safety warnings

- ▶ For scraping, select a high oscillation rate. Work on soft surface (e.g. wood) at a flat angle, and apply only light pressure. Otherwise the scraper can cut into the surface.

Further safety warnings

- ▶ Wear eye protection gear.
- ▶ Be aware of damage to spindle, blade attaching pin, lock components. Damage to these components may cause break of blade.
- ▶ Do not contact blade to work object before power on of tools.
- ▶ Before use of tool toward actual work object, operate tool in no-load for a moment. Check for any inappropriate installation from vibration and shake, and check for blade balance.
- ▶ Use designated surface for cutting work.
- ▶ Do not lay down operating tool. Operate tool when it is on hand.
- ▶ After work is finished, do not touch blade and work object until they are completely cooled down. They might cause injury.
- ▶ Follow manufacturer's instruction for appropriate installation and use of blade. Care good care and storing of blade.
- ▶ Do not use other small bushing or adaptor for modification of blade.
- ▶ Use designated components for this power tool
- ▶ Check whether work object is appropriately fixed. Fixing on fixing equipment or machine vice is much safer.
- ▶ After power off of power tools, check if blade is still oscillate.
- ▶ Do not use to material that contains asbestos/
- ▶ Use appropriate detector or contact energy supply company for checking hidden pipes. Contacting electricity wire can cause fire or electric shock. Damage to gas pipe may cause explosion. Damage to water pipe may cause property loss or electric shock.

【 Operating Instructions 】

◆ Tool operation

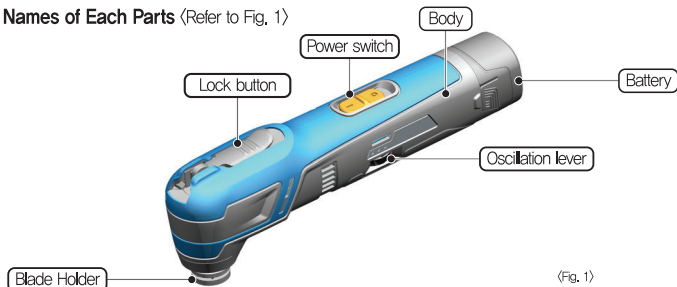
► Caution before operation

Switch cut off current and makes power tool operation stop when there is over current from Li-ion battery. Switch makes power tool operation stop automatically when there is over discharge to prevent battery damage. This function is for protecting Li-ion battery.

* Stop of operation during work by overload is not a tool failure.

※ Gear box surface is hot when there is continues load of works. Make sure to operate tool with gloves to prevent burn.

► Names of Each Parts (Refer to Fig. 1)

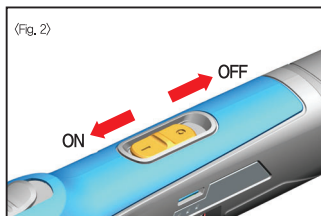


(Fig. 1)

► Switch operation (Refer to Fig. 2)

⚠ Before inserting battery, make sure that power switch is at OFF position.

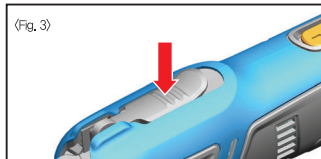
For tool operation, push power switch button to front and make it ON position. For continuous work, press front of switch button to lock it. When switch button is lock at ON position, make sure to hold tool securely and be cautious.



(Fig. 2)

► Lock button lever (Refer to Fig. 3)

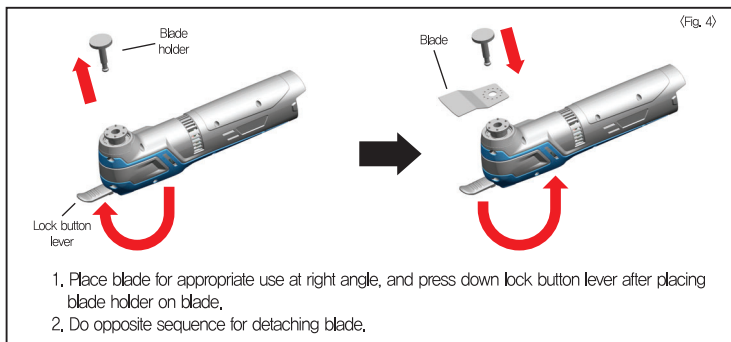
⚠ Do not control lock button lever when tool is operating. It might cause damage to tool.



(Fig. 3)

► Blade installation and separation <Refer to Fig. 4>

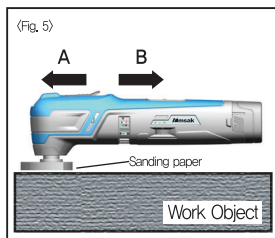
- ⚠ – Detach battery from tool before blade installation and separation
- Use lock button lever for replacing blade only, Never use lock button lever during tool operation. It might cause damage of tool.



► Sanding Work <Refer to Fig. 5>

- ⚠ Always hold tool body with two hands and securely hold it.
- ⚠ Never use blade.

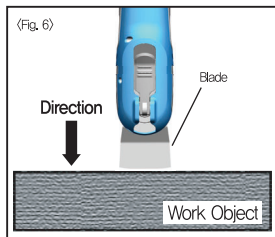
Use appropriate sanding paper for application. Make angle of sanding paper and work object as horizontal and work toward A, B direction.



► Cutting Work <Refer to Fig. 6>

- ⚠ During cutting work, use appropriate force according to material of work object. Do not start cutting work on work object. Wait until blade reaches at maximum speed and place tool on work object and slowly move forward. If tool starts operation on work object, blade might stop or move towards operator or make kick back. Do not apply excessive force to blade and do not tilt or shake it. Do not intend to stop blade that still has oscillation by applying pressure to side.

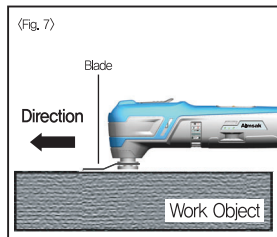
Use appropriate saw blade for right application.



► Scraping Work (Refer to Fig. 7)

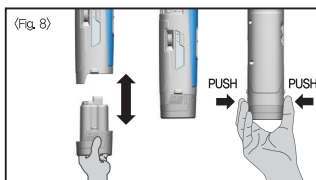
- ⚠ Always hold tool body with two hands and securely hold it.
- ⚠ Do not lift or tilt blade with excessive force.

Make blade and work object angle and horizontal.
Use appropriate saw blade for right application.



► Battery Insert (Refer to Fig. 8)

Do not use force when inserting the battery. To insert the battery, align the tongue on the battery with the groove in the housing and slip into place. Always insert it all the way until it locks in place with a little click. If not, it may accidentally fall out of the tool. To remove the battery, withdraw it from the tool while pressing the buttons on both sides of the battery.

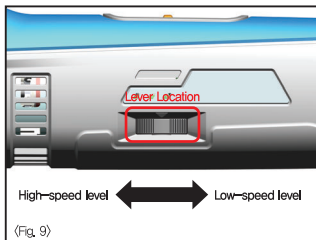


► Oscillation frequency control function

(Refer to Fig. 9)

Oscillation frequency speed can be controlled from Level 1~6 by control lever at right side of product.

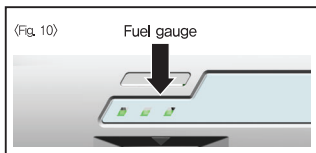
Level	Oscillation	Level	Oscillation
	4,000 opm		12,800 opm
	7,200 opm		14,400 opm
	10,400 opm		17,000 opm



※ Each level OPM has $\pm 10\%$ according to way of work operation.

► Fuel gauge (Refer to Fig. 10)

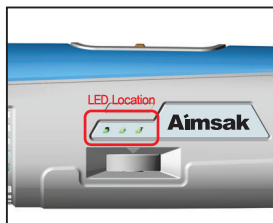
Lamp on the fuel gauge panel go out several seconds after releasing the switch trigger.
Please refer to the following table for the LED indicator status and the remaining battery capacity.



	3 level	More than 80%		1 level	20~50%
	2 level	50~80%		1 level blink	Less than 20%

► Trouble mode display function

- If there is trouble mode during operation, battery gauge display shows as below for current status of tool.
- LED goes off automatically after 10 sec.



Trouble	LED display	
	On	Off
Terminal contact trouble	LED Off	
High temp, battery protection	LED 3 level On 0.7s / Off 0.3s	
High temp, switch protection	LED 3 level On 0.3s / Off 0.7s	
Over current cut-off	LED 3 level On 0.05s / Off 0.1s On 0.2s / Off 0.65s (2 times Flashing)	
Battery low voltage protection	LED 1 level On 0.5s / Off 0.5s	

► Available Charger and Battery

	Battery	Available Charger	
	B20P14A B26P14A	ALC 3540	ALC 3540M





※ Charging battery B20P14A, B26P14A, B40P14A, B52P14A, B60P14A use the charger ALC 3540, ALC 3540M which can be checked voltage of each battery cell.

→ Prevent overcharge for life and safety of battery.

► Charger troubleshooting

1. If the LED lamp does not work,
 - Check connection of power cord into the outlet,
 - Check the cleanliness of power cord and battery terminal,
 - Insert another battery to check the charger working normally.
 2. The green LED flickering when the battery is applied.
 - Low temperature : Let stand at room temperature until normal temperature.
- ※ If this self : Checking does not solve the problem, please contact with Aimsak or authorized service center nearest you.

► Indicators and Meaning (ALC 3540, ALC 3540M)

Indicators		Meaning
Standby	 ► Green LED Flickering	► Battery charging is workable.
Charging	 ► Red LED on	► Battery is being charged.
Finish	 ► Green LED on	► Fully charged.
Battery High Temperature	 ► Red & Green LED on Red/Green	► Battery temperature has missed the normal range (0~45 °C) Charge will automatically start when allowable temperature is reached.
Battery low voltage		► Pre-charging mode voltage of the battery is low. (When a constant voltage charging mode is switched to rise,)

【 Maintenance & Storage 】

Always be sure that the tool is switched off and the battery is removed before attempting to perform inspection or maintenance.

- ▶ Keep the tool clean and inspect it regularly.

◆ Noise / oscillation information

- ▶ Use ear plug
- ▶ Calculated according to EC 60745-2-4 standard and average noise level rated A is as below
 - Sound pressure : 84 dB(A) , Sound ability : 95 dB(A)
- ▶ Calculated according to EC 60745-2-4 standard and total oscillation value is as below,
 - Sanding work : $ah = 2,6m/s^2$, $k = 1,5m/s^2$
 - Cutting work using replaceable saw blade : $ah = 13,1m/s^2$, $k = 1,5m/s^2$
 - Cutting work using half-circle shape saw blade : $ah = 12,2m/s^2$, $k = 1,8m/s^2$
 - scraping work : $ah = 17,3m/s^2$, $k = 1,6m/s^2$
- ▶ noise level may exceed 95 dB(A) during work, Average vibration to arm and hand is below 2,5m/sq.

【 Warranty 】

- ▶ It is warranted 1 year to be free of defects from workmanship and materials for the period of origin purchase. Some states do not allow the exclusion or limitation or incidental or consequential damages, so the limitation or exclusion below may not apply to you.
- Motor, battery is warranted 6 months since the period of origin purchase.
- Battery is consumable item and you need to buy new battery.
- ▶ This warranty does not apply where
 - Repairs have been made or attempted by others ; (such as immersion, external shock, overload operation)
 - Natural disasters (fire, earthquake, flood etc)
 - Repairs are required because of normal wear and tear ;
 - The tool has been abused, misused or improperly maintained ;
 - Alterations have been made.

Use within the scope of the tasks listed in the manual.

Otherwise, the equipment get damaged, shorten life or get injured.

and we do not have the responsibility and not able to repair your power tool.

【 Environmental Protection 】



Li-ion

Do not dispose of power tools and batteries into household waste,
Do not dispose of power tools and batteries into fire or ocean,
Be sorted for environmental-friendly recycling.
Defective or dead out battery packs must be recycled.



Power tools and batteries that are no longer usable must be collected separately and disposed of in an environmentally correct manner.

► Symbols

The following symbols are important for reading and understanding the operating instructions. Please take note of the symbols and their meaning.
The correct interpretation of the symbols will help you to use the machine in a better and safer manner.



Read all safety instructions



Wear hand protection



Wear head protection



Wear eye protection



Wear hearing protection



Wear dust mask



Caution for Hot surface



Caution for High voltage

MEMO
